

SED Flow Control GmbH Ball Valves

STERIFLU 942

Manual ball valve DN 8 – 100 (1/4" – 4")



The Steriflu 942 is a manually operated ball valve with a stainless steel handle and a plastic sleeve.

Features

- End connection extended butt weld ends or clamp ends
- Drainable design with "True ID port opening"
- V-ring stem seals
- EN ISO 5211 mount plate ensures direct assembly of actuators
- Manual handle with locking device
- Standard seat material FDA compliant 21CFR177.1550
- Butt weld ends with controlled delta ferrit content
- Suitable for CIP and SIP cleaning processes
- Antistatic device

Working pressure	
DN	PS (bar) *
8	63
10	63
15	63
20	63
25	40
32	31
40	25
50	20
65	15
80	12
100	10

* Fluid group 2 only

Technical Data

Control function:	Manually operated
Max. working pressure:	See table
Max. working temperature:	180°C (356°F) dependent on application
Sealing material:	PTFE full cavity or half cavity filler
Ball valve material:	Body/Ball/Cap CF3M (316L)
End connection:	Butt weld ends DIN 11850 Butt weld ends ASME BPE Butt weld ends ISO 1127 Clamp ends ASME BPE see page 6 and 7
Surface finish:	Internal 0,6µm polished. Other finishes upon request.
Flow rate:	Kv in m ³ /h see page 5

STERIFLU 342

Pneumatic ball valve DN 8 – 100 (1/4" – 4")



The Steriflu 342 is pneumatically operated ball valve with a piston actuator, alternatively single or double acting. The pneumatic actuator has an extruded aluminium housing with internal and external Alodur special hard anodization for corrosion protection.

Features

- End connection extended butt weld ends or clamp ends
- Drainable design with "True ID port opening"
- V-ring stem seals
- EN ISO 5211 mount plate ensures direct assembly of actuators
- Pneumatically operated actuator with optical indication as standard
- Standard seat material FDA compliant 21CFR177.1550
- Butt weld ends with controlled delta ferrit content
- Suitable for CIP and SIP cleaning processes
- Antistatic device

Optional

- Stroke limiter

Working pressure	
DN	PS (bar) *
8	63
10	63
15	63
20	63
25	40
32	31
40	25
50	20
65	15
80	12
100	10

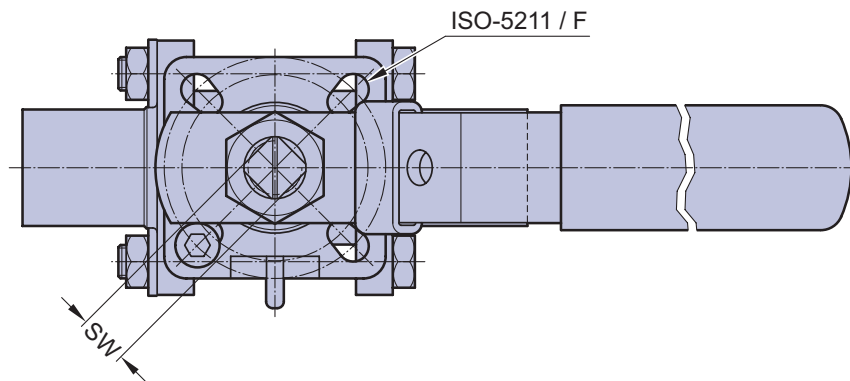
* Fluid group 2 only

Technical Data

Control function:	Pneumatically operated Fail safe close (NC): Cf. 1 Double acting (DA): Cf. 3
Direction	
Control connection:	At Cf. 1 & 3, 90° to flow direction
Max. working pressure:	See table Higher working pressure may be achieved with different actuator. Please consult a SED factory representative for working pressure above the indicated maximum.
Max. working temperature:	180°C (356°F) dependent on application, > 180°C (356°F) upon request. For working temperatures > 100°C a mounting kit with spacer between ball valve and actuator is required!
Control pressure:	6 – 8 bar (87- 115 psi)
Sealing material:	PTFE full cavity or half cavity filler
Ball valve material:	Body/Ball/Cap CF3M (316L)
End connection:	Butt weld ends DIN 11850 Butt weld ends ASME BPE Butt weld ends ISO 1127 Clamp ends ASME BPE see page 6 to 8
Surface finish:	Internal 0,6µm polished. Other finishes upon request.
Flow rate:	Kv in m ³ /h see page 5

Ball valves

All versions			ASME BPE		DIN 11851-2		EN ISO 1127	
DN	NPS	Weight	EN ISO-5211		EN ISO-5211		EN ISO-5211	
DIN	INCH	Kg	F	SW	F	SW	F	SW
8	1/4"	0,6	-	-	-	-	F03-F04	9
10	3/8"	0,6	-	-	F03-F04	9	F03-F04	9
15	1/2"	0,7	F03-F04	9	F03-F04	9	F04-F05	11
20	3/4"	0,9	F04-F05	9	F04-F05	11	F04-F05	11
25	1"	1,2	F05-F07	11	F04-F05	11	F05-F07	14
32	1 1/4"	1,8	-	-	F05-F07	14	F05-F07	14
40	1 1/2"	2,9	F05-F07	14	F05-F07	14	F05-F07	14
50	2"	4,3	F07-F10	14	F05-F07	14	F07-F10	17
65	2 1/2"	8,6	F07-F10	17	F07-F10	17	F07-F10	17
80	3"	12,4	F07-F10	17	F07-F10	17	F07-F10	17
100	4"	21,0	F10-F12	22	F10-F12	22	F10-F12	22



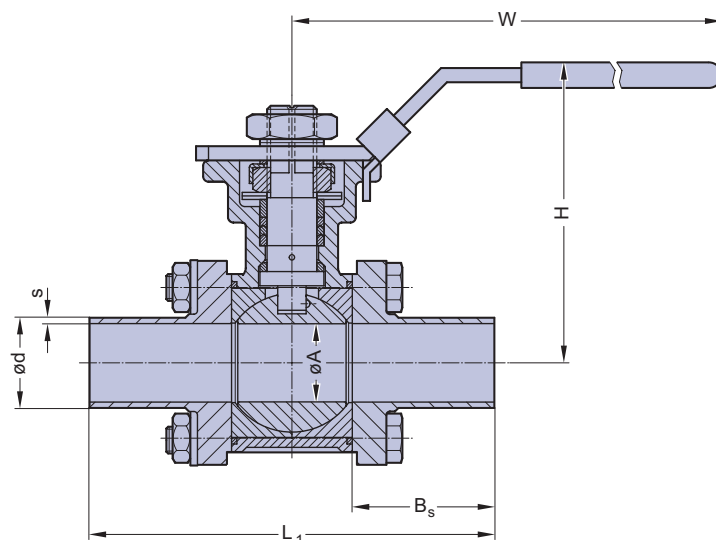
DN	NPS	Torque*	Kv-Value (m3/h)	
DIN	INCH	(Nm)	Butt weld ends / Clamp ends ASME BPE	Butt weld ends DIN / ISO
8	1/4"	9	-	7,0
10	3/8"	9	-	7,0
15	1/2"	10	9,0	13,0
20	3/4"	11	26,0	34,0
25	1"	16	55,0	60,0
32	1-1/4"	25	-	94,0
40	1-1/2"	27	170,0	213,0
50	2"	54	349,0	366,0
65	2-1/2"	73	510,0	595,0
80	3"	130	893,0	935,0
100	4"	158	1654,0	1700,0

* incl. 30% safety tolerance

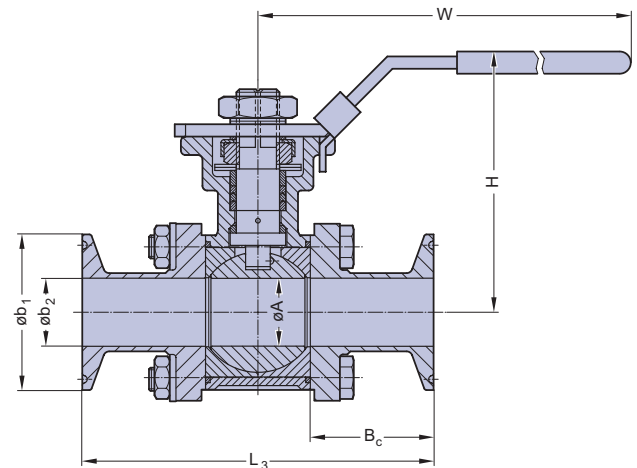
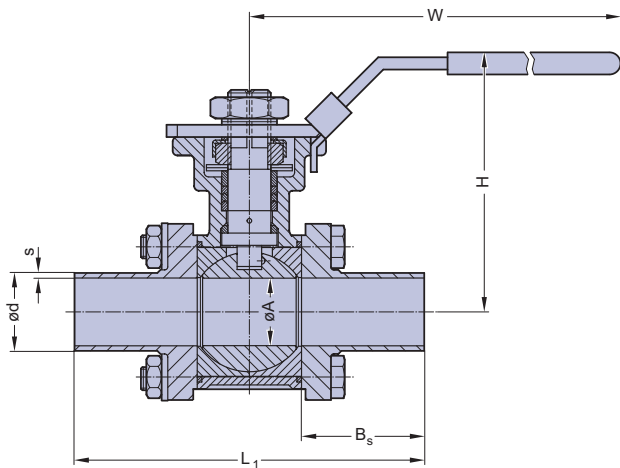
Technical data

DN	NPS	Butt weld ends DIN 11850 series 2 (Code 42)						
DIN	INCH	L1	Bs	Ød	S	ØA	W	H
8	1/4"	-	-	-	-	-	-	-
10	3/8"	135	55,75	13	1,5	9,4	130,7	66,8
15	1/2"	135	53,50	19	1,5	14	130,7	75,6
20	3/4"	165	65,50	23	1,5	18,1	165,6	84,6
25	1"	165	65,50	29	1,5	22,1	165,6	84,6
32	1 ¼"	165	56,00	35	1,5	29,7	187	117
40	1 ½"	165	56,00	41	1,5	34,8	187	117
50	2"	190	62,75	53	1,5	47,5	187	124,5
65	2 ½"	205	60,00	70	2,0	60,2	265	162,2
80	3"	265	82,25	85	2,0	72,9	265	169,2
100	4"	306	92,25	104	2,0	97,4	393	189,5

DN	NPS	Butt weld ends ISO 1127 (Code 40)						
DIN	INCH	L	Bs	Ød	S	ØA	W	H
8	1/4"	135	55,75	13,5	1,6	9,4	130,7	66,8
10	3/8"	135	53,50	17,2	1,6	14	130,7	75,6
15	1/2"	165	65,50	21,3	1,6	18,1	165,6	84,6
20	3/4"	165	65,50	26,9	1,6	22,1	165,6	84,6
25	1"	165	56,00	33,7	2,0	29,7	187	117
32	1 ¼"	165	56,00	42,4	2,0	34,8	187	117
40	1 ½"	190	62,75	48,3	2,0	44,3	187	124,5
50	2"	205	60,00	60,3	2,0	56,3	265	162,2
65	2 ½"	265	82,25	76,1	2,0	72,9	265	169,2
80	3"	265	82,25	88,9	2,3	72,9	393	189,5
100	4"	306	92,25	114,3	2,3	97,4	393	189,5



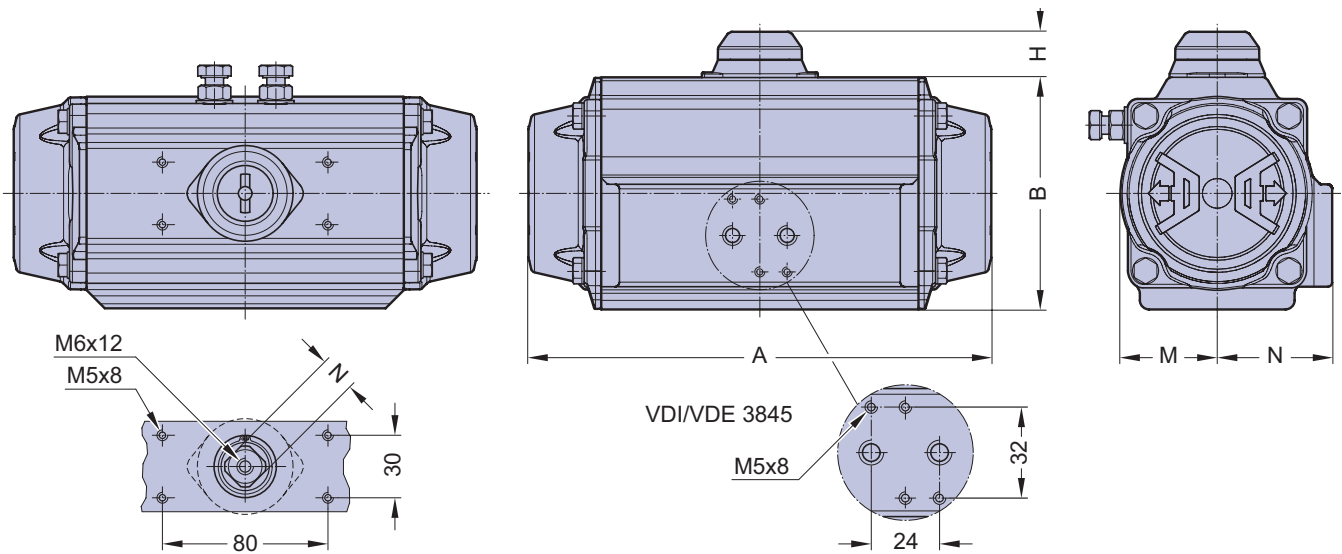
DN	NPS	Butt weld ends ASME BPE (Code 45)						
DIN	INCH	L1	Bs	Ød	S	ØA	W	H
15	1/2"	135	55,75	12,7	1,65	9,4	130,7	66,8
20	3/4"	135	53,5	19,05	1,65	15,75	130,7	75,6
25	1"	165	65,5	25,4	1,65	22,1	165,6	84,6
40	1 1/2"	165	56	38,1	1,65	34,8	187	117
50	2"	190	62,75	50,8	1,65	47,5	187	124,5
65	2 1/2"	205	60	63,5	1,65	60,2	265	162,2
80	3"	265	80,25	76,2	1,65	72,9	265	169,2
100	4"	306	92,25	101,6	2,10	97,4	393	189,5



DN	NPS	Clamp ends ASME BPE (Code 545 / 745)						
DIN	INCH	L3	Bc	b1	b2	ØA	W	H
15	1/2"	89,0	32,8	25	9,4	9,4	130,7	66,8
20	3/4"	101,0	36,5	25	15,75	15,75	130,7	75,6
25	1"	114,0	40,0	50,39	22,1	22,1	165,6	84,6
40	1 1/2"	140,0	43,5	50,39	34,8	34,8	187	117
50	2"	153,3	46,4	63,91	47,5	47,5	187	124,5
65	2 1/2"	197,0	56,0	77,39	60,2	60,2	265	162,2
80	3"	229,5	64,5	90,91	72,9	72,9	265	169,2
100	4"	243,5	61,0	118,92	97,4	97,4	393	189,5

Technical data

Actuator type	D0015 S0015	D0030 S0030	D0060 S0060	D0100	D0150 S0150	D0220 S0220	S0300	S0450
ISO Flange	F04	F05/F07	F05/F07	F05/F07	F07/F10	F07/F10	F07/F10	F10/F12
Air connection	G 1/8	G 1/8	G 1/8	G 1/8	G 1/4	G 1/4	G 1/4	G 1/4
A	136,0	153,5	203,5	241,0	259,0	304,0	333,0	394,5
B	69,0	85,0	102,0	115,0	127,0	145,0	157,0	177,0
H	20	20	20	20	20	30	30	30
M	29,0	36,0	42,5	49,5	55,5	64,0	69,5	80,0
N	43,0	48,5	50,5	56,5	63,0	72,0	77,0	86,0
O	11	14	14	17	17	22	22	27
Weight (kg)								
DA	1,0	1,6	2,7	3,8	5,2	8,1	10,0	14,2
NC, NO	1,1	1,9	3,1	4,4	6,0	9,4	12,4	17,1



Ordering key

1	2	3	4	5	6.1	6.2	7
Type	Size	Ball valve material	Ball valve connection	Sealing material	Actuator control function	Actuator type	Surface roughness of the bodies in Ra

Pos.	Description	Code	Specification
1	Type:	342 942	Aluminium actuator, pneumatic Stainless steel actuator, manual
2	Size:	8 - 100	DN 8, 10, 15, 20, 25, 32, 40, 50, 65, 80, 100
3	Ball valve material:	7A	Body/Ball/Cap 1.4404/316L, CF3M Investment cast
4	Ball valve connection:	40 42 45 545 745	Butt weld end acc. EN ISO 1127 (DIN 11866 Series B) Butt weld end acc. DIN 11850 Series 2 (DIN 11866 Series A) Butt weld end acc. ASME BPE MFS length (DIN 11866 Series C) Clamp ASME BPE, for tube ASME BPE, face to face ASME BPE Table DT-4.4.1-1 Clamp ASME BPE, for tube ASME BPE, face to face, MFS length
5	Sealing material:	3F 3H	PTFE (FDA compliant) Full-Cavity PTFE (FDA compliant) Half-Cavity
6.1	Actuator control function:	- 1 2 3	Manually operated Normally closed (NC) Normally open (NO) Double-acting (DA)
6.2	Actuator type:	T D0015 D0030 D0060 D0100 D0150 D0220 S0015 S0030 S0060 S0150 S0220 S0300 S0450	Stainless steel, hand lever Aluminum actuator, double acting, Actuator size 0015 Aluminum actuator, double acting, Actuator size 0030 Aluminum actuator, double acting, Actuator size 0060 Aluminum actuator, double acting, Actuator size 0100 Aluminum actuator, double acting, Actuator size 0150 Aluminum actuator, double acting, Actuator size 0220 Aluminum actuator, single acting, Actuator size 0015 Aluminum actuator, single acting, Actuator size 0030 Aluminum actuator, single acting, Actuator size 0060 Aluminum actuator, single acting, Actuator size 0150 Aluminum actuator, single acting, Actuator size 0220 Aluminum actuator, single acting, Actuator size 0300 Aluminum actuator, single acting, Actuator size 0450
7	Surface roughness of the bodies in Ra (µm):	07 SF1	Internal mechanically polished Ra ≤ 0,6 µm Mech. polished Ra ≤ 0,51 µm (20µ-inch), ASME BPE Table SF-2.4-1

Notes

Notes

SAMSON AT A GLANCE



STAFF

- Worldwide 4,500
- Europe 3,700
- Asia 600
- Americas 200
- Frankfurt am Main, Germany 2,000

MARKETS

- Chemicals and petrochemicals
- Power and energy
- District heating and cooling, building automation
- General industry
- Industrial gases
- Food and beverages
- Metallurgy and mining
- Oil and gas
- Pharmaceuticals and biotechnology
- Marine equipment
- Water and wastewater
- Pulp and paper

PRODUCTS

- Valves
- Self-operated regulators
- Actuators
- Valve accessories
- Signal converters
- Controllers and automation systems
- Sensors and thermostats
- Digital solutions

SALES SITES

- More than 50 subsidiaries in over 40 countries
- More than 200 representatives

PRODUCTION SITES

- SAMSON Germany, Frankfurt, established 1916
Total plot and production area: 150,000 m²
- SAMSON France, Lyon, established 1962
Total plot and production area: 23,400 m²
- SAMSON Turkey, Istanbul established 1984
Total plot and production area: 11,053 m²
- SAMSON USA, Baytown, TX, established 1992
Total plot and production area: 9,200 m²
- SAMSON China, Beijing, established 1998
Total plot and production area: 10,138 m²
- SAMSON India, Pune district, established 1999
Total plot and production area: 18,000 m²
- SAMSON Russia, Rostov-on-Don, established 2015
Total plot and production area: 5,000 m²
- SAMSON AIR TORQUE, Bergamo, Italy
Total plot and production area: 27,684 m²
- SAMSON CERA SYSTEM, Hermsdorf, Germany
Total plot and production area: 14,700 m²
- SAMSON KT-ELEKTRONIK, Berlin, Germany
Total plot and production area: 1,060 m²
- SAMSON LEUSCH, Neuss, Germany
Total plot and production area: 18,400 m²
- SAMSON PFEIFFER, Kempen, Germany
Total plot and production area: 35,400 m²
- SAMSON RINGO, Zaragoza, Spain
Total plot and production area: 18,270 m²
- SAMSON SED, Bad Rappenau, Germany
Total plot and production area: 10,370 m²
- SAMSON STARLINE, Bergamo, Italy
Total plot and production area: 26,409 m²
- SAMSON VDH PRODUCTS, Netherlands
- SAMSON VETEC, Speyer, Germany
Total plot and production area: 27,090 m²

SED Flow Control GmbH

Am Schaffbaum 2 · 74906 Bad Rappenau, Germany
Phone: +49 7264 921 0 · Fax: +49 7264 921 21
E-mail: info@sed-flowcontrol.com · Internet: www.sed-flowcontrol.com